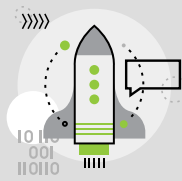




PROFESSIONAL DEVELOPMENT

Need Training on Infinite Campus?

The Yearly Event Series (YES) connects all our district and school staff to nine, timely, and role-specific training sessions from August 2024 through May 2025. It also includes access to recordings from previous live events for a full year.



Let's Get it Started!

Aug 7 & 21, 2024

Training for:

Building Administrator, Counselor, Front Office Staff, Registrar, SIS Coordinator, Teacher



Adventures in Ad Hoc & Core Reports

Sept 17-18, 2024

Training for:

Building Administrator, Counselor, Database Administrator, Front Office Staff, Registrar, SIS Coordinator



Tracking Student Progress

Oct 15-16, 2024

Training for:

Assessment Coordinator, Building Administrator, Counselor, Front Office Staff, Registrar, SIS Coordinator



Infinite Campus Discovery Week

Nov 18-22, 2024

Training for:

Assessment Coordinator, Building Administrator, Business Office Staff, Counselor, Database Administrator, Front Office Staff, Registrar, SIS Coordinator, Superintendent, Teacher, Technology Administrator



Master Scheduling

Jan 14-15, 2025

Training for:

Building Administrator, Counselor, Front Office Staff, Registrar, SIS Coordinator



Everything Online Registration

Feb 18-19, 2025

Training for:

Building Administrator, Counselor, Front Office Staff, Registrar, SIS Coordinator, Technology Administrator

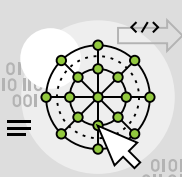


Round Table Roundup

March 4 & 18, 2025

Training for:

Assessment Coordinator, Building Administrator, Business Office Staff, Counselor, Database Administrator, Front Office Staff, Registrar, SIS Coordinator, Superintendent, Teacher, Technology Administrator



Premium Products Deep Dive

April 15-16, 2025

Training for:

Building Administrator, Business Office Staff, Counselor, Food Service Staff, Front Office Staff, Registrar, SIS Coordinator, Teacher



Putting a Bow on it

May 6-7, 2025

Training for:

Building Administrator, Counselor, Front Office Staff, Registrar, SIS Coordinator



infinitecampus.com/yes